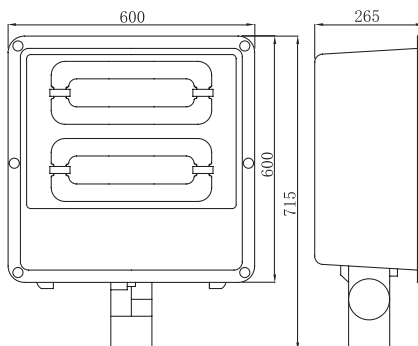
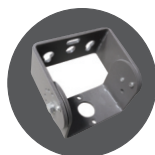


JR-TG0413



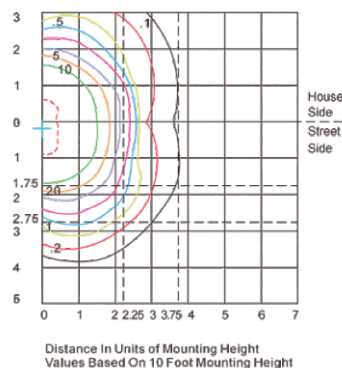
Connecting structure one



Connecting structure two



Connecting structure three



Features

- ◎ lighting integration of a high-pressure die-cast aluminum one-piece, transparent tempered glass.
- ◎ The surface wear-resistant epoxy powder spraying from climate change impacts.
- ◎ lamp base and lamp box the joints with high temperature silicone rubber to prevent rain, dust, immersion.
- ◎ There are two different reflectors are available, in order to apply a different place.
- ◎ The lighting angle can be adjusted, to achieve the best results projected.

Technical Data

Lamp source: JR-FX Series
Frequency: 230kHz
Power: 2*200W/2*250W
Input voltage: 220V/90V-305V
Working temperature: -35°C~50°C
G.W.: 19.82/18.82KG
packing size: 730x645x310(mm)



Applications : Professionally used for tennis court, Swimming pool and sports place, Outdoor parking lot, Road square and other large area.



JOLIGHTING ● Induction Flood Light



www.jolighting.com